

DNP

DIGITAL PHOTO PRINTER

DP-DS80D

For Safe Operation
Start-up Guide

English

Sicherheitshinweise
Leitfaden zur Inbetriebnahme

Deutsch

Pour un fonctionnement sans risque
Guide de démarrage

français

Para un funcionamiento seguro
Guía de inicio de

español

安全にお使いいただくために
スタートアップガイド

日本語



WARNING

To reduce the risk of fire or electric shock, do not expose this apparatus to rain or moisture. To avoid electrical shock, do not open the cabinet. Refer servicing to qualified personnel only.

This apparatus must be earthed.

For pluggable equipment, the socket-outlet be installed near the equipment and shall be easily accessible.

To disconnect the main power, unplug the AC IN connector.

When installing the unit, incorporate a readily accessible disconnect device in the fixed wiring, or connect the power plug to an easily accessible socket-outlet near the unit. If a fault should occur during operation of the unit, operate the disconnect device to switch the power supply off, or disconnect the power plug.

Warning on power connection

Use a proper power cord for your local power supply.

1. Use the approved Power Cord (3-core mains lead) /Appliance Connector / Plug with earthing-contacts that conforms to the safety regulations of each country if applicable.
2. Use the Power Cord (3-core mains lead) / Appliance Connector /Plug conforming to the proper ratings (Voltage, Ampere).

If you have questions on the use of the above Power Cord/Appliance Connector/Plug, please consult a qualified service personnel or the distributor.

For the Customers in Europe

This product shall not be used in the residential area.

This is a Class A product. In a domestic environment, this product may cause radio interference in which case the user may be required to take adequate measures.

Dai Nippon Printing Co.,Ltd. hereby declares that this DP-DS80D is in compliance with the essential requirements and other relevant provisions of Directive 1999/5/EC.

The manufacturer of this product is Dai Nippon Printing Co.,Ltd.

1-1-1 Ichigaya Kagacho, Shinjuku-ku, Tokyo 162-8001, Japan.

The importer for R&TTE and RoHS is DNP PHOTO IMAGING EUROPE SAS,

ZI PARIS NORD II -BP 51077, 22 AVENUE DES NATIONS, PARC SILIC -VILLEPINTE, 95948 ROISSY
CDG CEDEX, FRANCE.

If you want to dispose this product, do not mix with general household waste. There is a separate collection system for used electronics products in accordance with legislation under the WEEE Directive (Directive 2002/96/EC) and is effective only within European Union. For details, consult your dealer.



For kundene i Norge

Dette utstyret kan kobles til et IT-strømfordelingssystem.

dansk

Undertegnede Dai Nippon Printing Co.,Ltd. erklærer herved, at følgende udstyr DP-DS80D overholder de væsentlige krav og øvrige relevante krav i direktiv 1999/5/EF.

Nederlands

Hierbij verklaart Dai Nippon Printing Co.,Ltd. dat het toestel DP-DS80D in overeenstemming is met de essentiële eisen en de andere relevante bepalingen van richtlijn 1999/5/EG.

suomi

Dai Nippon Printing Co.,Ltd. vakuuttaa täten että DP-DS80D tyyppinen laite on direktiivin 1999/5/EY oleellisten vaatimusten ja sitä koskevien direktiivin muiden ehtojen mukainen.

ελληνικά

Με την παρούσα η Dai Nippon Printing Co.,Ltd δηλώνει ότι DP-DS80D συμμορφώνεται προς της ουσιώδεις απαιτήσεις και τις λοιπές σχετικές διατάξεις της οδηγίας 1999/5/EK.

magyar

Alulírott, Dai Nippon Printing Co.,Ltd. nyilatkozom, hogy a(z) DP-DS80D megfelel a vonatkozó alapvető követelményeknek és az 1999/5/EC irányelv egyéb előírásainak.

italiano

Con la presente Dai Nippon Printing Co.,Ltd. dichiara che questo DP-DS80D è conforme ai requisiti essenziali ed alle altre disposizioni pertinenti stabilite dalla direttiva 1999/5/CE.

norsk

Dai Nippon Printing Co.,Ltd. erklærer herved at utstyret DP-DS80D er i samsvar med de grunnleggende krav og øvrige relevante krav i direktiv 1999/5/EF.

português

Dai Nippon Printing Co.,Ltd. declara que este DP-DS80D está conforme com os requisitos essenciais e outras disposições da Directiva 1999/5/CE.

svenska

Härmed intygar Dai Nippon Printing Co.,Ltd. att denna DP-DS80D står i överensstämmelse med de väsentliga egenskapskrav och övriga relevanta bestämmelser som framgår av direktiv 1999/5/EG.

For the Customer in USA

FCC part 15

This equipment has been tested and found to comply with the limits for a Class A digital device, pursuant to Part 15 of the FCC Rules.

These limits are designed to provide reasonable protection against harmful interference when the equipment is operated in a commercial environment.

This equipment generates, uses and can radiate radio frequency energy and, if not installed and used in accordance with the instruction manual, may cause harmful interference to radio communications. Operation of this equipment in a residential area is likely to cause harmful interference in which case the user will be required to correct the interference at his or her own expense.

Changes or modifications not expressly approved by the party responsible for compliance could void the user's authority to operate the equipment under FCC rules.

This device complies with FCC radiation exposure limits set forth for an uncontrolled environment. The antenna used for this transmitter must be installed to provide a separation distance of at least 20 cm from all persons and must not be co-located or operating in conjunction with any other antenna or transmitter.

Caution: Use shielded cables to connect this computers.

Any changes or modifications not expressly approved by the grantee of this device could void the users authority to operate the equipment.



For Safe Operation

Please read this document carefully before use.

- Be sure to read this document before using the product. After reading, keep it in a safe place where it can be easily accessed as needed.
- For more information about how to use this product, please refer to User's manual (in the attached CD-ROM).
- The warnings listed here are to ensure proper use of the product, to prevent physical injury to the customer or other persons, and to prevent property damage. Please follow these warnings.




■ Warnings and Cautions

The possible levels of injury or damage due to misuse are categorized below as Warnings and Cautions, according to the degree of danger involved.




 Warning	Accidents caused by failure to heed the warnings accompanying this symbol may lead to serious or fatal injury.
 Caution	Accidents caused by failure to heed the cautions accompanying this symbol may lead to physical injury or property damage.

■ Symbols

The symbols shown have the following meanings:

	This symbol indicates warning and caution messages. The warning content is indicated in or near the symbol.
	This symbol indicates prohibited actions. The prohibited action is indicated in or near the symbol.
	This symbol indicates necessary actions or instructions. The action is indicated in the symbol.

Warning

- Use the product only with the designated voltage and frequency. Improper connection may cause an electric shock or fire.
 - Avoid connecting too many devices to the outlet used for this product and using extension cords. The outlet may overheat and cause a fire.
 - Do not damage, cut, bundle, or alter the power cord. Also, the cord may be damaged if heavy objects are placed on it, or if pulled or bent with excessive force, and it may cause a fire or an electric shock.
 - Do not install the product in places with salinity or corrosive gases in the air. This may cause a fire.
 - Do not block the vents of the product. Heat may build up in the product and cause a malfunction or fire.
 - Do not stand on or place heavy objects on the product. Also, do not apply excessive force on the buttons, switches, terminals, etc. This may damage the product and cause injury to the user or other people.
 - Store the bag of the product out of the reach of children. It may cause suffocation if placed over the head.
 - Be careful not to injure yourself or damage other things on the edges of the product.
 - Do not use this product for applications involving human life (such as medical, space, aeronautic, or other applications that require extreme reliability).
-
- The product weighs approximately 14 kg (31 lbs.). When moving it, lift it in a way that avoids excessive physical stress. Lifting recklessly or dropping the product may cause physical injury.
 - Place the product as close to an outlet as possible to be able to easily unplug the power cord in case of problem.
 - If there is dust on the plug, clean it off thoroughly. It may cause an electric shock or a short circuit.
 - If metal objects or liquids have fallen into the product, or if there is smoke, a strange odor, or any other abnormality, immediately turn the power off, and unplug the power cord. Then contact a service representative. Do not continue using the product if it is not operating properly. This may cause an electrical shock, a short circuit, fire, or a malfunction.
-
-  Be sure to ground the product. Otherwise, a short circuit may occur, causing fire or an electric shock.
-
-  Do not plug or unplug the cord with wet hands. This may cause an electric shock.
-
-  Do not open the product, disassemble internal parts, or modify the product. It may cause an electric shock, fire, or injury, or a product malfunction. For internal check-ups, adjustments, or repair, please contact a service representative.

Caution



- Do not install the product in dusty or humid places. This may cause fire or an electric shock, or damage the product.
- Do not install the product on an unstable surface. It may fall and cause injury to the user or other people.
- Do not allow foreign objects to enter into the product. They may cause an electric shock, a short circuit, or fire, or damage the product. If something falls into the product, immediately turn the power off, unplug the power cord, and call a service representative.
- Do not open the cover while printing. This may damage the product.
- Do not spill or spray liquids or chemicals onto the product.
- When cleaning the cover, do not use thinner, trichloroethane, benzene, ketone-based cleaners, or chemically treated cloths. They could discolor or deteriorate the cover.



- At least once a year, unplug the power cord, and clean the prongs and the plug. If dust accumulates, it may cause a fire.
- When printing continuously for long periods in a small room, be sure to ventilate the room properly.
- If you intend to use the product on a transportation vehicle (train, truck, ship, etc.), please talk to a representative in advance.
- When disposing of the product, accessories, packaging materials, or media (paper, ribbon), please abide by local waste removal ordinances. For details, contact your local government offices.



- When unplugging the cord, always grip the plug. Do not pull on the cord as it may damage the cord and cause an electric shock or fire.
- When moving the product, be sure to unplug the power cord. Otherwise, the cord may be damaged, which may cause fire or an electric shock.
- For safety, when not using the product for an extended period of time, be sure to unplug the power cord. Otherwise, it may cause an electric shock, fire, or a malfunction.



- Parts with this warning get extremely hot. Do not touch these parts after printing. There is a danger of burns.



- Do not touch the gear mechanisms. There is a danger of injury if fingers get caught in spinning gears.



- Do not put your fingers inside the parts showing this mark. There is a danger of injury.

Caution for installation

- Before using the product, read "For Safe Operation" carefully and observe the instructions therein.
- Use care when moving the product. Never try to carry the product alone. Dropping it may cause injury or property damage.
- Do not use or store the product near a fire, humid places, in direct sunlight, near an air conditioner or heater, or any other location with unusually high or low temperature, strong humidity, or excessive dust.
- Do not place the product where chemical reactions occur, such as in a laboratory.
- Do not install the product where there is salinity or corrosive gas in the air.
- The product must be installed on a firm, level surface where there is ample ventilation.
- Do not put anything on top of the product.
- Do not use the product near a radio or television, and do not use the same wall outlet for the product and a radio or television. Otherwise radio or television reception may be adversely affected.
- Do not use a power voltage or a frequency other than those specified.
- Do not put anything on the power cord or step on it.
- Do not drag or carry the product by the power cord or the USB cable.
- Avoid plugging the power cord into an outlet with many other cables connected.
- Do not bundle the power cord.
- Always grip the plug housing, not the cord, to plug or unplug the power cord.
- Make certain the power is turned off before connecting or disconnecting the USB cable.
- Avoid using a long USB cable or connecting it to any noise-producing device. If it is unavoidable, use a shielded cable or twisted pair for each signal.
- Use a shielded USB cable compatible with the USB 2.0 specifications.
- Place the product near the outlet where the power cord can be unplugged easily to shut the power off.
- Use an AC outlet that accepts a three-pronged plug. Otherwise, there may be a danger of electric shock.
- Do not use the cord set supplied with the printer for other devices.
- Use the cord set supplied for the product.
- Only use items that are certified safe according to the standards of the country where they are to be used.
- Make sure the blind plates are installed when not using the Turning Unit. Otherwise, there may be a danger of fire.

Specifications

Print method	Thermal dye sublimation transfer	Rated current	100 V 3.96 A 240 V 1.69 A
Dimensions	322 mm(W) x 367 mm(D) x 171 mm(H)	Operating environment	Temperature 5°C to 35°C in natural convection conditions
Weight	Approx. 14.0 kg (printer unit only)		Humidity 35% to 80% with no condensation
Rated voltage	AC100 V – 240 V 50 Hz/60 Hz		

Start Up Guide

Before using the product, read "For Safe Operation" carefully.

1. Checking the contents

Printer unit



Power cord



Ribbon cassette



Paper holder



Paper cassette



CD-ROM
•User's manual



Explanation booklet (this document)

- For Safe Operation
- Start up guide



2. Duplex printing (option)

This product supports duplex printing when used together with the optional Turning Unit. For more information about duplex printing, refer to the Operating Instructions supplied with the optional Turning Unit.

■Contents

- (1) Overview
- (2) Preparation
- (3) Operation
- (4) Cleaning and Clearing Paper Jams

3. Printer installation

1 Plug the power cord (supplied) and the USB cable, and turn on.

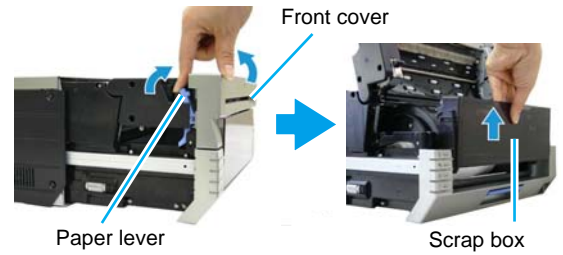
* If you have to install the printer drive, do not plug the USB cable now.



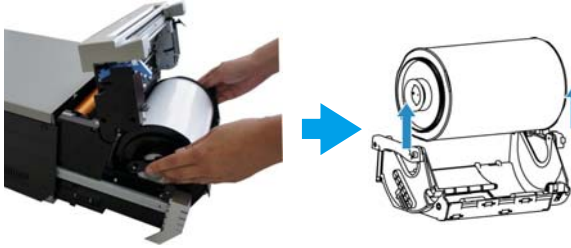
2 Release the opening lever and pull out the mechanism unit.



3 Lift the paper lever, raise the front cover and remove the scrap box.

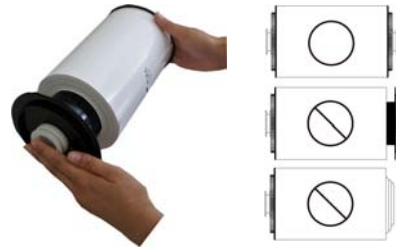


4 Remove the paper cassette, and remove the paper holders from the paper cassette.

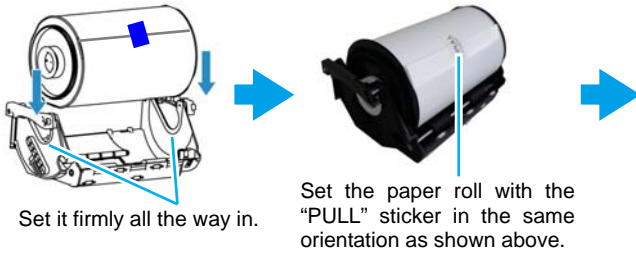


5 Remove packaging materials from the paper holders and set the new paper roll.

Set the roll so that there is no gap between the paper and the holder.



6 Set the paper holders into the paper cassette.

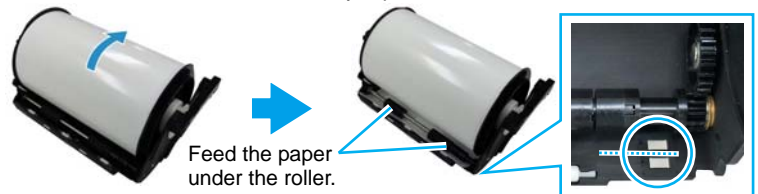


Set the paper roll with the "PULL" sticker in the same orientation as shown above.

7 Remove the "PULL" sticker attached to the roll, and rotate the roll in the direction of the arrow to feed the paper.

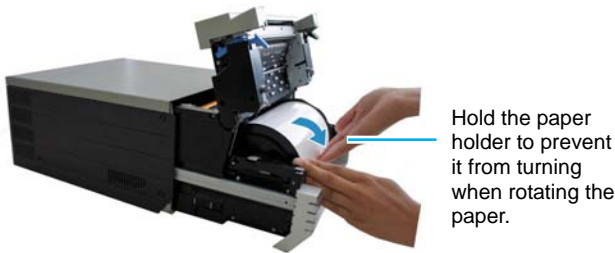
Feed the paper until its edge is **aligned in the middle of the two holes (dashed line) on the paper cassette** as shown in the picture on the right.

Pay attention to **feed the paper straight**. If the paper is not straight, white space may appear on the edges of the printout, the ribbon may wrinkle, and the resister may slip.



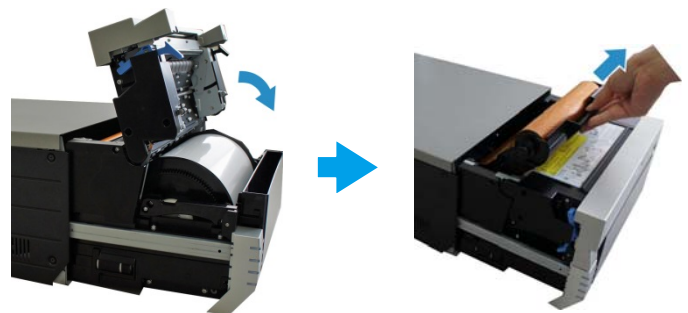
8 Set the paper cassette into the printer. Rotate the paper in the direction of the arrow to advance the leading edge until the buzzer beeps.

When paper is correctly inserted the paper LED turns off.



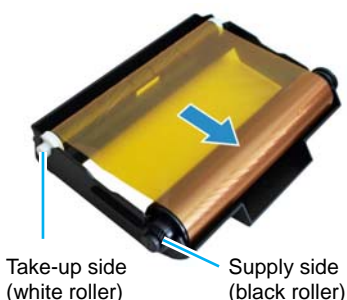
9 Set the scrap box and close the front cover.

10 Remove the ribbon cassette from the printer unit.



11 Set the new ribbon into the ribbon cassette.

Rotate the roller in the direction of the arrow to take up the slack.



12 Install the ribbon cassette to the printer unit.



Install the cassette so that the supply side (black roller) is at the front.

13 Close the mechanism unit.



Note: When the mechanism unit is closed, the printer starts paper initialization (4 blank sheets are output). Through paper initialization, the outer layer of the paper that may be dirty is cut off. However, if the power is turned on after the paper is set, the paper initialization will not start.

Dai Nippon Printing Co., Ltd.